

State of Rhode Island and Providence Plantations

Budget



Fiscal Year 2014

Volume III – Education

Lincoln D. Chafee, Governor

Agency

Public Telecommunications Authority

Agency Mission

Educate, inform, enlighten and entertain. Provide educational services to all citizens regardless of their ability to pay for services.

Agency Description

The Rhode Island Public Telecommunications Authority has been the owner and license holder for WSBE-DT Rhode Island PBS, Rhode Island's public television station. On August 1, 2012, the Board of the Rhode Island PBS Foundation voted to acquire all licenses, permits, rights and assets of the Authority used or related to the operation of non-commercial television station WSBE-TV. On August 12, 2012, the Authority applied to the FCC to assign the broadcasting license to the Foundation. The FCC approved the proposal on September 24, 2012 and the Authority and the Foundation consummated the assignment of the broadcasting license to the Foundation effective October 10, 2012. As of that date, the Authority no longer has responsibility for operating the WSBE-TV television station.

WSBE broadcasts 111 hours (168 hours on cable) per week on two digital channels (36.1 and 36.2) and is headed by the President and Chief Executive Officer who is responsible for all activities, including private fundraising, which partially supports the Authority's budget.

WSBE provides life-long learning opportunities to all Rhode Islanders, regardless of their ability to pay, through its programming and outreach services. Early childhood development programming is broadcast seven hours daily on channel 36.1. Other educational programming is broadcast eleven and a half hours daily on channel 36.2 and includes science and nature, documentaries, performing arts, history and music. A wide range of how-to programs enable adult viewers to develop skills in computers, painting, automotive repair, sewing, cooking, home improvement and other practical topics. The mandate to provide training in telecommunications is fulfilled through the internship programs in the production and technical areas. There are currently eight student interns employed at WSBE.

WSBE also provides access to the PBS Digital Learning Library, an interactive, computer-based telecommunications system connecting schools and libraries across the state, providing forums, national and international gateways, databases and Internet access, serving students and teachers in Rhode Island.

WSBE is fulfilling and maintaining its' number one goal of educating, to ensure that children are prepared to learn when they enter school, through pre-school program services and related outreach programs. Outreach programs include literacy, nutritional education, domestic violence and other topics of community concern. Public affairs programs air to increase awareness of community problems and issues and to help our citizens learn and cope with an increasingly complex world.

Statutory History

Title 16, Chapter 61 of the Rhode Island General Laws established the Rhode Island Public Telecommunications Authority and defines the duties of its President and Chief Executive Officer. The Governor's FY 2014 Appropriations Act repeals Chapter 16 in its entirety, effective July 1, 2013.

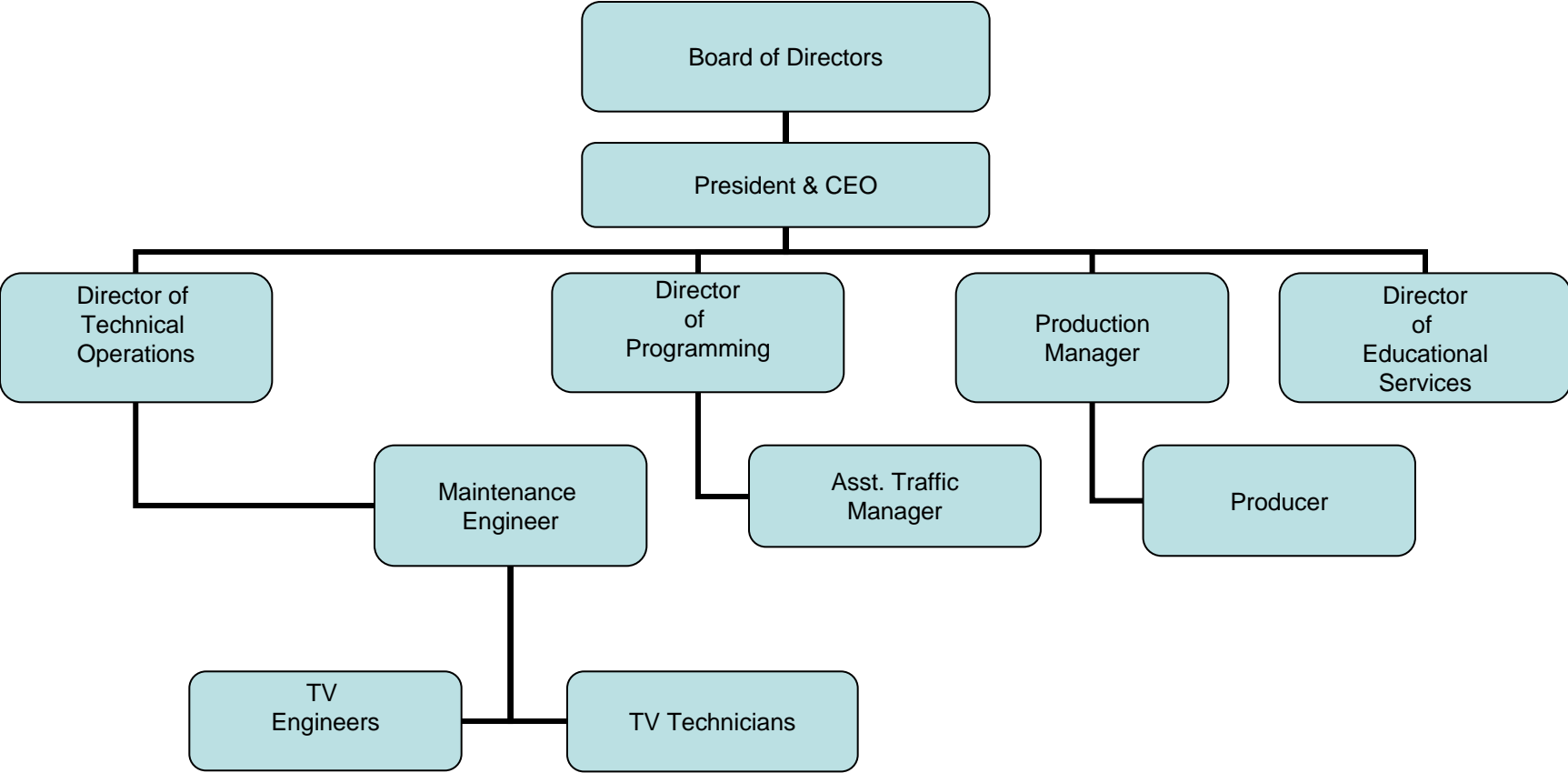
The Budget

Public Telecommunications Authority Central Management

	2011 Audited	2012 Audited	2013 Enacted	2013 Revised	2014 Recommend
Expenditures By Subprogram					
Operations	1,525,009	1,557,832	1,500,972	795,486	-
Total Expenditures	\$1,525,009	\$1,557,832	\$1,500,972	\$795,486	-
Expenditures By Object					
Personnel	1,511,315	1,542,745	1,485,472	779,986	-
Operating Supplies and Expenses	13,694	15,087	15,500	15,500	-
Subtotal: Operating Expenditures	1,525,009	1,557,832	1,500,972	795,486	-
Total Expenditures	\$1,525,009	\$1,557,832	\$1,500,972	\$795,486	-
Expenditures By Funds					
General Revenue	929,325	928,421	799,077	795,486	-
Other Funds	595,684	629,411	701,895	-	-
Total Expenditures	\$1,525,009	\$1,557,832	\$1,500,972	\$795,486	-

The Agency

Public Telecommunication Authority



Personnel

Public Telecommunications Authority Central Management

	Grade	FY 2013		FY 2014	
		FTE	Cost	FTE	Cost
Unclassified					
PRESIDENT & CEO	1	1.0	102,936	-	-
DIRECTOR OF TECHNICAL OPERATIONS		1.0	66,093	-	-
PROGRAM DIRECTOR		1.0	65,281	-	-
PRODUCTION MANAGER		1.0	61,321	-	-
MAINTENANCE ENGINEER		1.0	50,602	-	-
TV ENGINEER		3.0	117,895	-	-
ASSISTANT TRAFFIC MANAGER		1.0	45,395	-	-
DIRECTOR		1.0	52,048	-	-
TV TECHNICIAN		4.0	173,410	-	-
Subtotal		14.0	\$734,981	-	-
Overtime		-	9,500	-	-
Turnover		-	(270,853)	-	-
Subtotal		-	(\$261,353)	-	-
Total Salaries		14.0	\$473,628	-	-
Benefits					
Payroll Accrual			2,942	-	-
Holiday			5,787	-	-
FICA			33,612	-	-
Retiree Health			34,242	-	-
Health Benefits			95,657	-	-
Retirement			105,700	-	-
Subtotal			\$277,940	-	-
Total Salaries and Benefits		14.0	\$751,568	-	-
Cost Per FTE Position (excluding Statewide Benefit Assessment)			\$53,683	-	-
Statewide Benefit Assessment			\$16,718	-	-
Payroll Costs		14.0	\$768,286	-	-
Purchased Services					
Clerical and Temporary Services			11,700	-	-
Subtotal			\$11,700	-	-
Total Personnel		14.0	\$779,986	-	-
Distribution By Source Of Funds					
General Revenue		8.0	\$779,986	-	-
Other Funds		6.0	-	-	-
Total All Funds		14.0	\$779,986	-	-

1 The Authority employs 14.0 FTE state funded positions. All employees were laid off from the Authority and offered equivalent jobs at the Foundation. December 2, 2012 marked the first day employees appeared on the Foundation's payroll system.